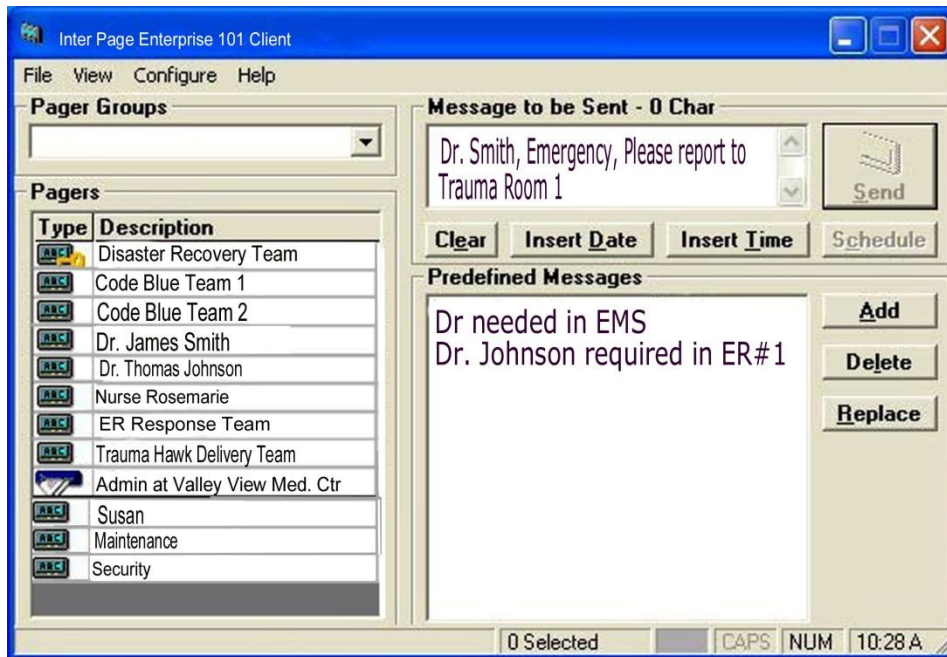


Enterprise 101 - Network Paging



3 User License: Part # 6000 Unlimited User License: Part #6100

FEATURES

Send custom messages in under 2 seconds to On-Site Pagers, Cell Phones, PDA's and Wide Area Pagers:

Message retrieval and message history:

Reminder messages and schedules calls:

Background operation:

Simple 'Click & Point' user interface:

Message Splitting:

Fully LAN Operational:

Reduces the number of calls to mobile phones:

BENEFITS

Improves workplace communications

Improved accountability.

Ensures important events are never missed

Instant access to message sending without disruption

Easy to learn, no training required

Allows long messages to be sent to pagers and mobile phones

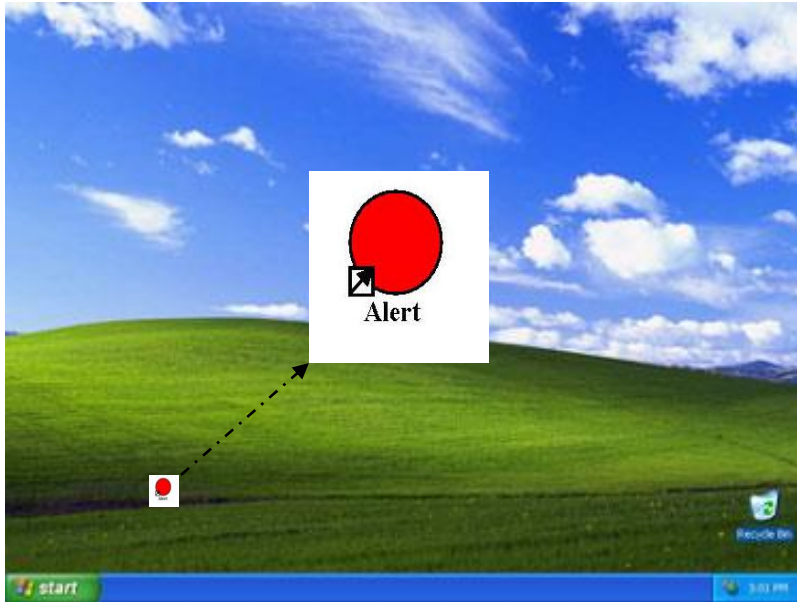
Enables users to send messages without overloading reception

Saves on mobile phone bills





Alert Button



The new **"Alert Button"** feature added to the **Enterprise 101 Paging Software** allows a user to create and send a custom predefined message discretely by double-clicking the "Alert Button" icon located on the users **desktop**. The message will contain a user name, ID or location along with a predefined message. The alert can be sent to LED Signs, On-site Pagers, Cell Phones, Email Addresses and wide area pagers. This feature addresses the need of healthcare, education and enterprise clients in notifying key individuals when an emergency situation occurs on-site and requires immediate and discreet communication.

